

ISNT IT ROMANTIC

COMPOSED BY RODGERS AND HART

ARRANGED BY RALPH BOWEN 2013

PIANO

Handwritten chord symbols above the first system: A^b7-5 $G7+5$ $G^b7-5 F7$ $E MA7-5$ $G MA7+5$ $A MA7-5$ $A7-5$ $B7+9$ $B^b7 SUS4$ $A^b MA7+5$

Handwritten chord symbols above the second system: $A^b MA7+5$ $G7 ALT$ $C-6$ A^b7-5 $G7+5$ $G^b7-5 F7$ $E MA7-5$ $G MA7+5$ $A MA7-5$

Handwritten chord symbols above the third system: $A7-5$ $B7 ALT$ $B^b7 SUS4$ C/O^b $B MA7+5$ A^b-11 $D^b7 ALT$

Handwritten chord symbols above the fourth system: A^b/G $G7 SUS4 G7-5$ $C-7 SUS4$ $B7 ALT$ B^b-11 $A-7-5$ A^b-11

A^b/G $G7sus4$ $G7-5$ $C-7sus4$ G^b7+11 C^bMA7 B^b7sus4

A^b7-5 $G7+5$ G^b7-5 $F7$ E^bMA7-5 A^b/G $G7sus4$ $G7-5$ $C-7sus4$

$C-7sus4$ $B7ALT$ B^b7sus4 $A7+11$ A^b7+11 $G7ALT$ G^b13-9

C^bMA7 B^b7sus4 $A^bMA7+11$ A^b7-5 $G7+5$ G^b7-5 $F7$ E^bMA7-5

INS'T IT ROMANTIC

Solo Changes

Composed by Lorenz Hart & Richard Rodgers

Emaj7#11 B/G Amaj7#11 B7alt Abm+7 G7alt Cm7 Ab7#11



5 Emaj7#11 B/G Amaj7#11 B7alt Abm+7 G7alt Db7sus4 Db7



9 Abm+7/G G7alt Cm7/G A7alt/G



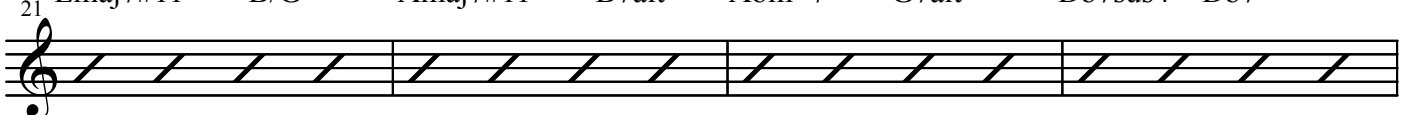
13 Abm+7/G G7alt Cm7 /Bb Ab7#11 Gbmaj7#5



17 Emaj7#11 B/G Amaj7#11 B7alt Abm+7 G7alt Cm7 Ab7#11



21 Emaj7#11 B/G Amaj7#11 B7alt Abm+7 G7alt Db7sus4 Db7



25 Abm+7/G G7alt Cm7 /Bb Am7b5 Ab7#11



29 Abm+7/G G7alt Gbmaj7#11



33 Cm7 _____ 8 _____

